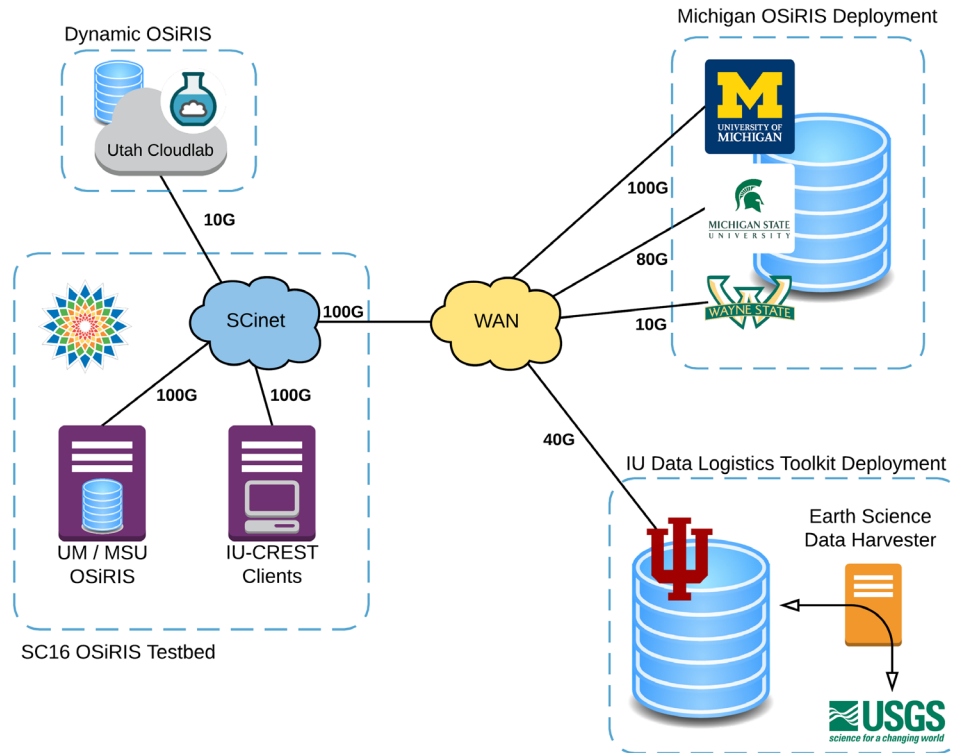


# Open Storage Research InfraStructure (OSiRIS)



Ceph Storage block head node: This is a Dell R730xd with 2 x Xeon E5-2650 for a total of 48 HT cores (24 real) and 384GB RAM. It also hosts 4 NVMe devices for Ceph OSD journals (15 per NVMe).

Ceph storage block attached storage: We use a Dell MD3060e JBOD enclosure attached with 2 x 12Gbps SAS connections. There are 60 8TB spinning disks in this enclosure for Ceph data volumes.

